

Funders Survey Results: Climate Mitigation, Adaptation, and Resilience



**MODERATOR: ANNE HENSHAW, OAK
FOUNDATION**



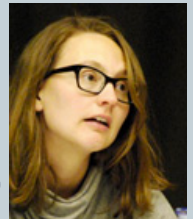
**SPEAKERS: JOHN NORDGREN,
CLIMATE RESILIENCE FUND**



**HEATHER MCGRAY,
CLIMATE JUSTICE RESILIENCE FUND**



MISSY STULTS, CLIMATE RESILIENCE FUND



This webinar is co-sponsored by “Climate and Energy Funders Group/CGBD, International Funders for Indigenous Peoples, and the International Human Rights Funders Group”

Climate Justice Resilience Fund

An international fund promoting community-led, rights-based approaches to climate change adaptation and resilience-building



OAK
FOUNDATION

People

- Women
- Youth
- Indigenous Peoples

Pillars

- Advocacy
- Access to Information
- Local Initiatives
- Movement Infrastructure
- Leadership Development

Regions

- East Africa
- Bay of Bengal
- Arctic

Entry Points

- Water Access
- Food Security and Sovereignty
- Sustainable Livelihoods
- Migration and Relocation

About CRF

MacArthur
Foundation



The Climate Resilience Fund (CRF) CRF's mission is to mobilize the resources necessary to build a climate resilient society. CRF is currently in a development phase with plans to launch programs and regranting operations in 2017.

- **CRF's builds** climate adaptation capacity and fosters resilience outcomes in communities across the U.S. and for the natural systems on which they depend.
- **CRF engages** partners in the philanthropic, NGO, and academic communities, and federal agencies to catalyze and leverage investments in climate adaptation services and outcomes.
- **CRF facilitates** coordinated and collaborative grantmaking through our Partners Alliance and provides regranting services for philanthropic organizations.

Objectives: Funders Survey



Understand current philanthropic activities and interest in climate mitigation, adaptation, and resilience

Identify similarities, overlaps, and gaps in funding priorities

Devise interest/need for funders working group on adaptation and resilience

Identify potential interest in adaptation and resilience related topical issues for working group

Identify potential participants/contributors in working group

Methods: Survey



- Designed in collaboration with representatives from CRF, Oak Foundation, and the Climate and Energy Funders Group
- Administered through Climate and Energy Funders Group
 - Environmental Grantmakers Association
 - The Funders Network
 - Food and Agriculture Sustainability Funders
 - Indigenous Funders Group
 - International Funders for Indigenous Peoples; International Human Rights Funders Group
- Ran from May 20th to June 10th, 2016



CHORUS
FOUNDATION

HAWAII COMMUNITY FOUNDATION
Amplify the Power of Giving

Z. Smith Reynolds FOUNDATION

THE CYNTHIA & GEORGE MITCHELL FOUNDATION

I VEY foundation

DISABILITY RIGHTS FUND

CHARLES STEWART MOTT FOUNDATION

LAIRD NORTON FAMILY FOUNDATION

nutiva FOUNDATION

Appleton Education Foundation
Enhancing Educational Excellence Since 1997

MacArthur Foundation

IFIP
International Funders for Indigenous People

FORD FOUNDATION

T **Tremaine Foundation**

AMERICAN JEWISH WORLD SERVICE

GRAY FAMILY FOUNDATION

THRESHOLD FOUNDATION

ISLAND FOUNDATION

the Amazon Conservation Team

Alaska Conservation Foundation

mcf Marin Community Foundation

Kalliopeia FOUNDATION

Prentice Foundation

PAUL M. ANGELL FAMILY FOUNDATION

Grassroots INTERNATIONAL
FUNDING GLOBAL MOVEMENTS FOR SOCIAL CHANGE

NATIONAL FOREST FOUNDATION

THE KENDED A FUND

THE CIRCLE LE CERCLE

the Gaia foundation

The San Diego Foundation
Growing a Vibrant Region

GATES FAMILY FOUNDATION

BELLA VISTA FOUNDATION
BFV
Enhancing Community

ClimateWorks FOUNDATION

BULLITT FOUNDATION

THE CHRISTOPHER REYNOLDS FOUNDATION, Inc.

BONWOOD SOCIAL INVESTMENTS

THE NEW YORK COMMUNITY TRUST

WINTHROP ROCKEFELLER FOUNDATION

SUNLIGHT FOUNDATION

THE OCEAN FOUNDATION

THE LUMPKIN FAMILY Foundation

Liberty Hill Foundation
Change. Not Charity.

Swift Foundation

Northwest Fund for the Environment

THE FLEDGLING FUND
helping stories take flight

compton foundation

the David & Lucile Packard FOUNDATION

FREY FOUNDATION

THE KRESGE FOUNDATION
Expanding opportunities in America's cities

Margaret A. Cargill PHILANTHROPIES

THE MCKNIGHT FOUNDATION

The Heloise Munson FOUNDATION

THE CHRISTENSEN FUND

The Americana Foundation

Liberty Prairie Foundation

New England Grassroots Environment Fund

Edwards Mother Earth Foundation

skoll global threats fund

Roy A Hunt Foundation

OAK FOUNDATION

THE WILLIAM AND FLORA HEWLETT FOUNDATION

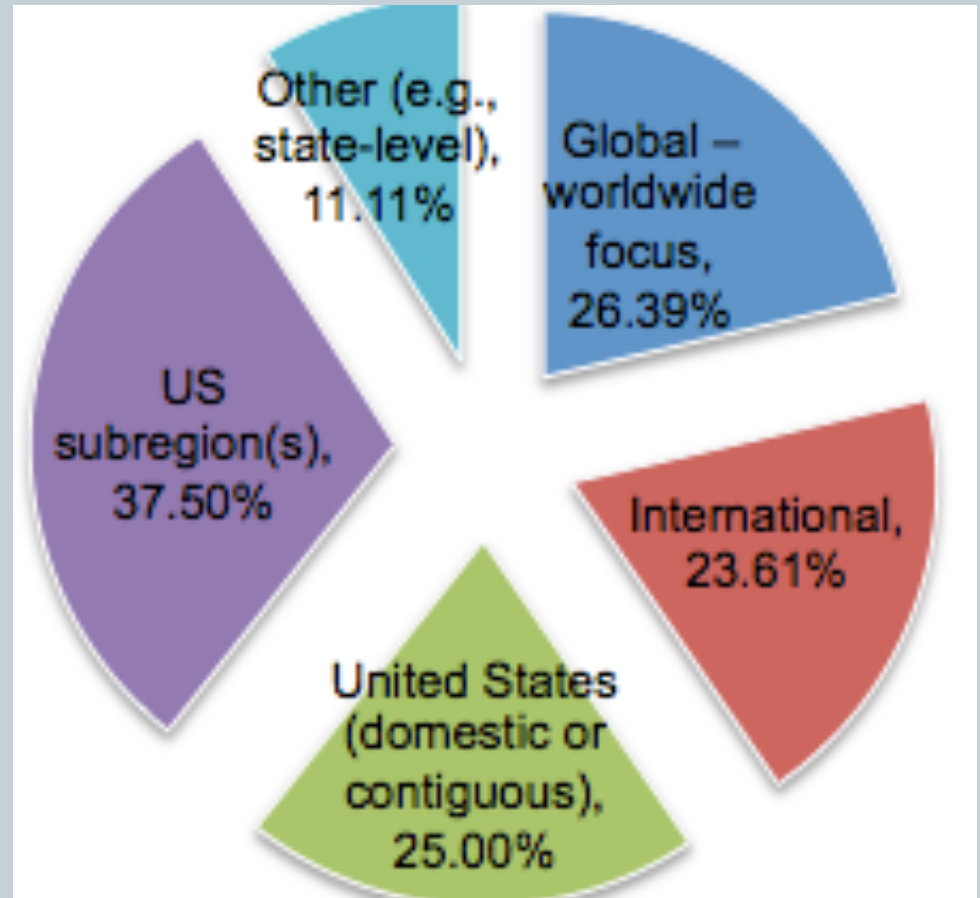
J.M. KAPLAN FUND

CEDAR TREE FOUNDATION

European Climate Foundation

Respondents

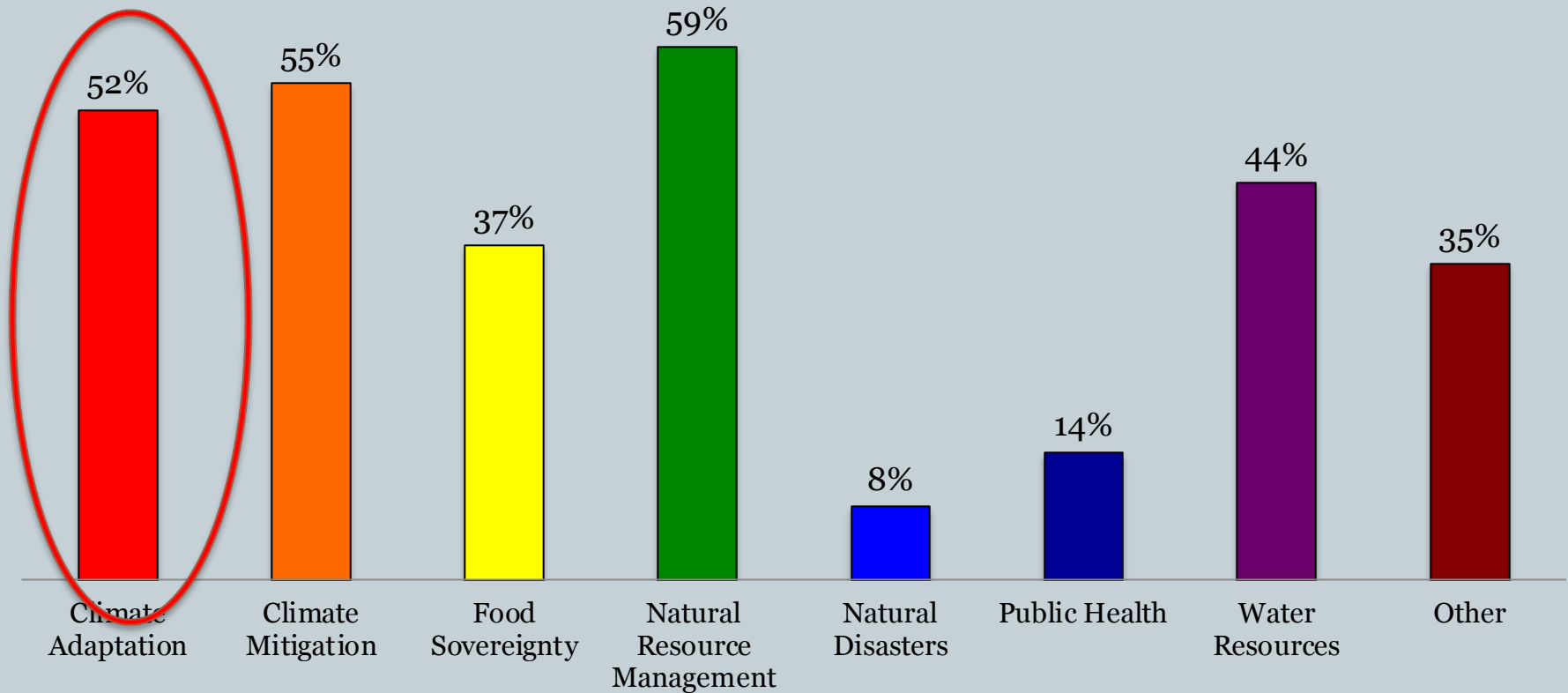
- Sixty six foundations
- Respondents:
 - 28% program directors
 - 25% executive directors
 - 21% program officers
 - 26% others (e.g., presidents, communication officers, trustees, board members)



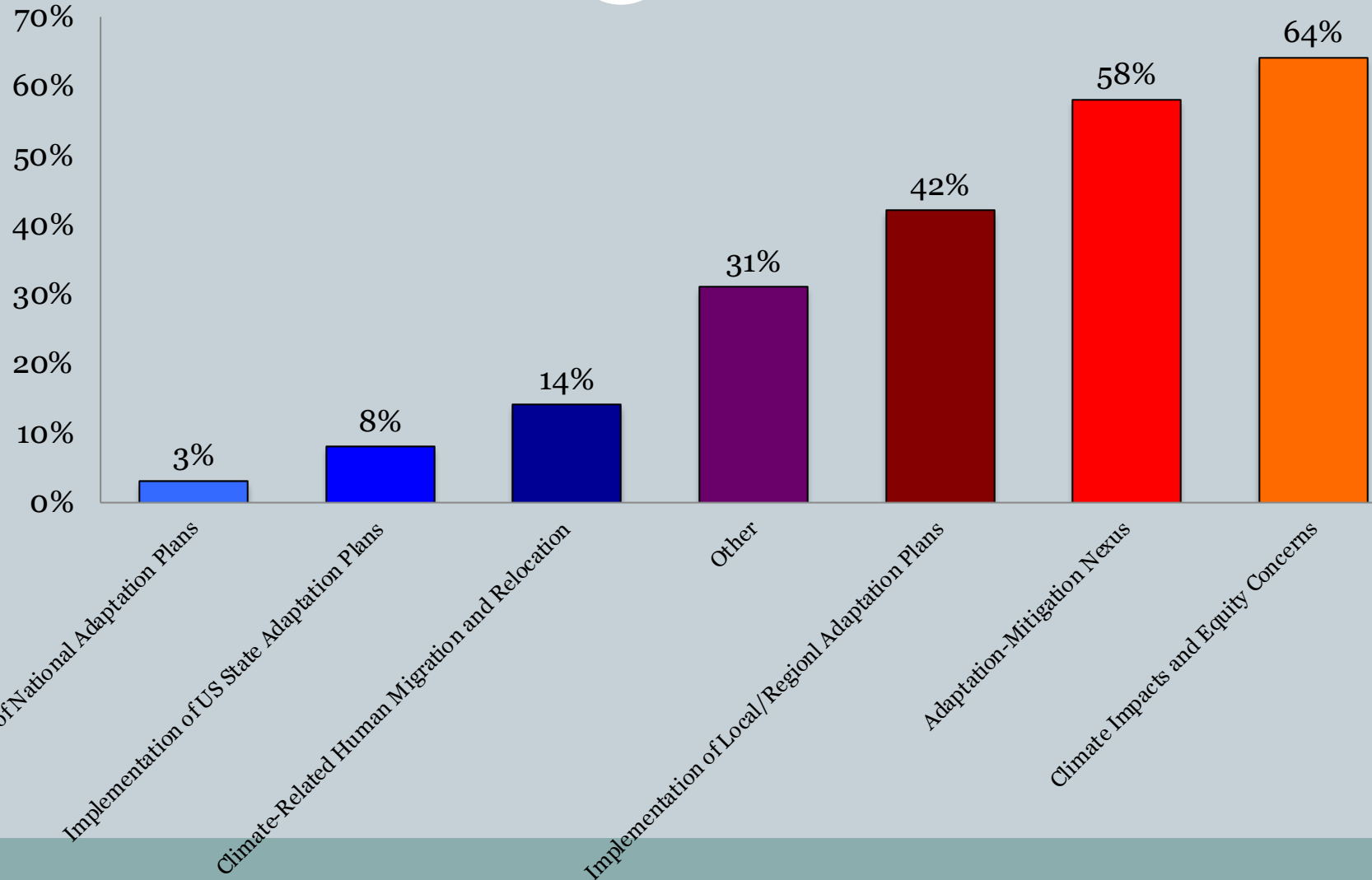
Topical Areas of Focus



Percentage of Survey Respondents



Climate Adaptation Investment Areas



Key Constituencies



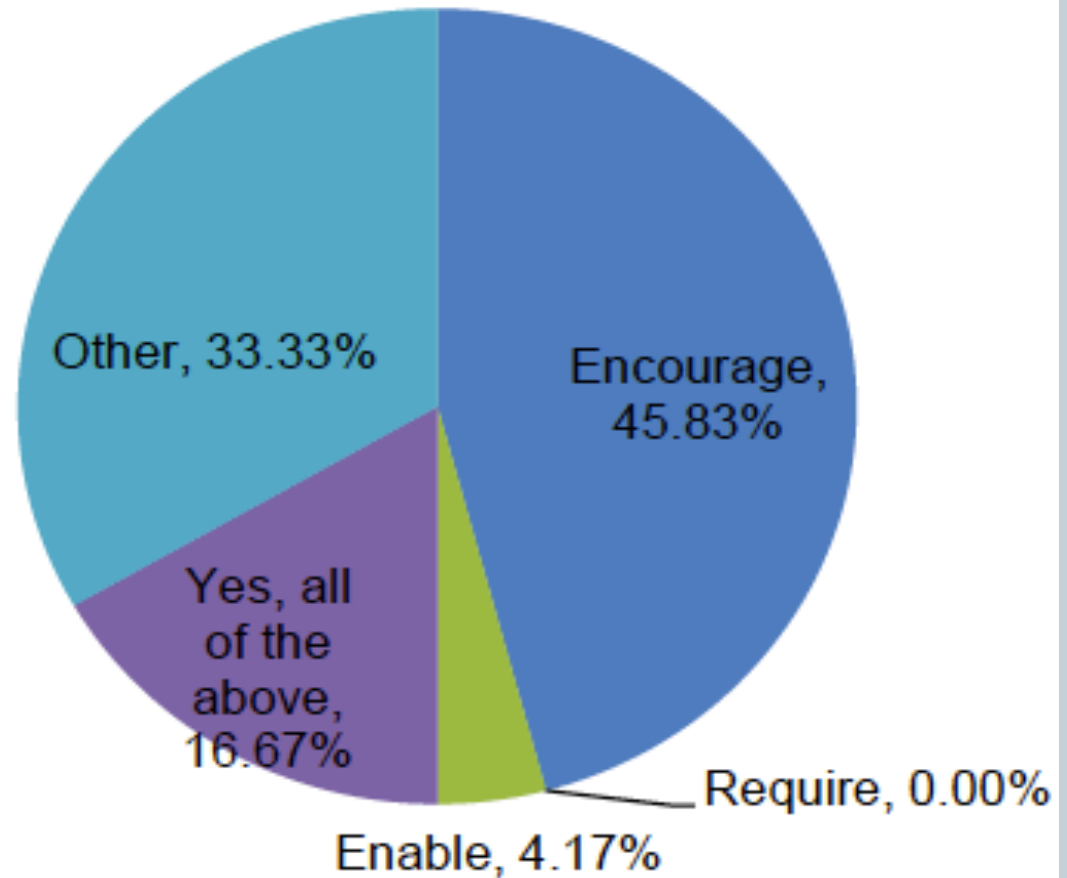
Over 50% of respondents identified **rural areas or regions** (61%), low income or socio-economically **disadvantaged communities** (57%), or **indigenous populations** (52%) as key constituencies or target audiences.



Integrating climate change into grantmaking



- **46% encourage** grantees to consider climate change impacts or trends
- **17% encourage, enable, and require** grantees consider climate change



Integrating climate change into grantmaking



- **Encourage:**

- “We issued a report detailing relevant climate change impacts and reference it as rationale for our grants, and ask grantees to ID how they're addressing these regional impacts (or others).”
- “We normally do this by issuing queries as we review grant proposals”

- **Enable:**

- “We support supplementary training...support for research and analysis of climate impacts, funding of climate resilience projects”

- **Require:**

- “If they don't incorporate climate action as a priority for their organization, we don't work with them.

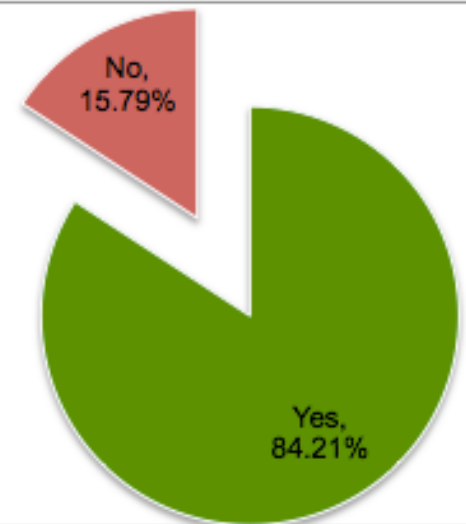
- **None:**

- ✦ “Not exactly....but would like to talk about it.”

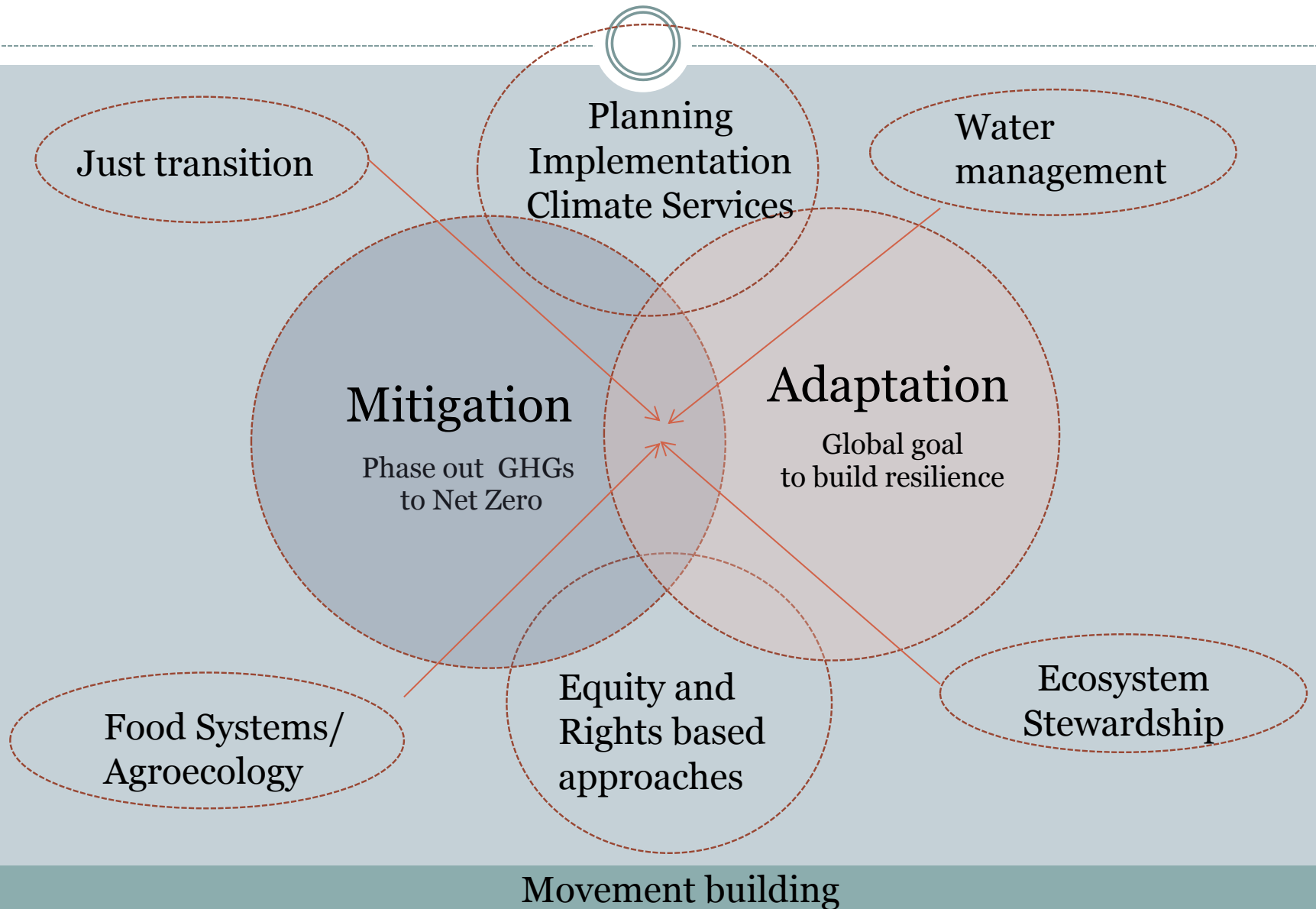
Interest in developing an adaptation and resilience working group

- **90%** interested in learning more about climate change as it relates to existing program focal areas.
- **84%** interested in participating in a philanthropic working group on adaptation and resilience.
- **67%** interested in contributing to programming of working group.

Percent of respondents expressing interest in participating in a foundation affinity group on adaptation



Cross cutting themes and approaches



Key Take-Aways



- Philanthropic Interest in Climate Adaptation is significant
- Foundations are employing a variety of approaches to incorporating climate considerations into grantmaking
- Foundation representatives are eager to learn more about how to address climate impacts and advance climate action
- Importance of social equity within climate action agenda stands out
- There is significant interest in the development of a philanthropic adaptation and resilience working group

Areas for further inquiry/analysis



- Continue sharing survey results
- Initiate a working group(s)?
- Create online platform to build communities of practice and track field?
- Develop common terminology



Discussion

Your thoughts and reactions?

Questions?

Contact:

- John Nordgren (john@climateresiliencefund.org)
- Anne Henshaw (anne.henshaw@oakfnd.org)
- Heather McGray (heather.mcgray@cjrfund.org)
- Missy Stults (missy.stults@gmail.com)