



Coordination and Collaboration in the Resilience Ecosystem (CCRE) Program

A Year in Review 2021

This Year in Review provides a look back to the CCRE program's activities and accomplishments over the past year, including summaries of grants awarded, our work with the members of the Resilience Ecosystem* of climate practitioners, formation of a new grantee advisory group, and the collaborative work currently underway with our 2021 grantees and NOAA's Climate Resilience Toolkit team. The Review also includes a brief look ahead for what to expect from the CCRE in 2022.

Executive Summary

What is CCRE?

The CCRE is a multi-faceted field-building program administered by the Climate Resilience Fund. The Program is designed to engage and support the growth and development of the U.S. climate adaptation and resilience community (aka the Resilience Ecosystem) with guidance from climate adaptation and resilience experts and practitioners. As part of that mission, CRF has committed to engage directly with that community of practitioners each year to solicit feedback on current needs in the field, to better understand how our grantmaking can support efforts to scale resilience planning and implementation action, and to inform the criteria we use to evaluate proposals to the CCRE.

True to its name, the Program leverages all-too-scarce resources and invests strategically to foster collaboration and coordination amongst field-leading organizations and individuals. CRF works to ensure our federal and private funding partners are aligned with purpose and committed to advancing a shared strategy for scaling the capacity of the U.S. climate adaptation and resilience field.

Highlights from the 2021 CCRE Program

*We define the Resilience Ecosystem (RE) as the open and inclusive community of public and private entities working to create, evolve, and sustain science-based resources, services, tools, and expertise that can help resource managers, land-use planners, businesses, and others to proactively build resilience to climate-related impacts.

CRF and NOAA co-hosted the CCRE Advisory Meeting

- A group of more than 30 experts convened in April 2021 to help CRF build evaluation criteria for each of four priority funding areas in this year's RFP. Those priority areas were, 1) Diversity, equity & inclusion, 2) Nature-based solutions to climate change, 3) Finance-ready resilience planning, and 4) Measures of success.

Released a Call for Proposals

- CRF published a [Request for Proposals](#) to the CCRE program in May 2021.

Continued to Build Impact Through our Core Values

- CRF continues to build upon our central organizing values of diversity, equity and inclusion and nature-based solutions to climate change within the CCRE program. While we created values lenses through which to evaluate all proposals to the CCRE in 2020, with this year's RFP we, for the first time, created specific funding priorities and deliverables under those core values with the intention of bringing these values to scale in adaptation and resilience planning in communities across the U.S.

Improved Experience for CCRE program applicants

- CRF partnered with a woman-owned small business web design contractor to develop a new and improved [landing page](#) for the CCRE program hosted at www.climateresiliencefund.org.

Leveraged the CCRE with New Private Funding

- CRF secured a grant from the Wells Fargo corporation to support pilots for building and financing climate resilience in rural communities across the U.S.

Recruited an expanded advisory group to review CCRE proposals

- CRF was advised by eight subject matter experts with experience in each of the four priority areas of this year's RFP and six core team reviewers on its 2021 CCRE grants.

Approved four (4) new grants totaling \$300,000 through the CCRE Program

- Each grant project is focused on creating synthesis papers for best practice in one of four priority areas – DEI, Nature-based Solutions, Finance for resilience implementation, and Measure of Success and integrating findings with the NOAA Climate Resilience Toolkit team's Practitioner Guide.

Published a joint announcement with NOAA

- The release is available on both the [NOAA Research News](#) site and CRF [CCRE web site](#).

Assembled a CCRE Advisory Group to Support the 2021 Grantees

- CRF and NOAA teamed to recruit a 5-member external Advisory Group to help support this year's CCRE grantees and advise on CCRE program strategy moving into 2022.

2021 CCRE Grants

Projects funded through these 2021 grants focus on four priorities - Diversity, Equity & Inclusion, Nature-based solutions to climate change, finance-ready planning, and measures of success - all prioritized by participants in annual “Resilience Ecosystem” convenings sponsored by CRF and NOAA. Work will be completed on all projects in Spring 2022. These 2021 awards went to the following projects:

Helping Communities Identify and Obtain Funding for Climate Resilience

American Society of Adaptation Practitioners (ASAP) - \$75,000

ASAP and their partners at Climate Resilience Consulting will create a ready-to-fund Resilience Guidebook by seeking insights from practitioners and advisor networks, reviewing grey and peer-reviewed literature, organizing and validating information to identify themes and gaps, and creating case studies and examples of working strategies. ASAP will work with the US Climate Resilience Team to integrate the new guidance developed into a practitioner and training guide for climate service practitioners.

Integrating Principles of Diversity, Equity and Inclusion with Climate Resilience Planning

Antioch University’s Center for Climate Preparedness and Community Resilience - \$75,000

The Antioch project team, together with partners in Black, Indigenous, and People of Color communities, will review and summarize existing best practices for community engagement in climate adaptation planning that integrates diversity, equity, and inclusion. The team will create a white paper that summarizes the findings and will refine the US Climate Resilience Toolkit’s Steps to Resilience to include these lessons learned.

Building Community Understanding of Nature-based Solutions for Resilience

National Wildlife Federation (NWF) - \$75,000

NWF and its partners at EcoAdapt will draw on existing literature and the Federation's extensive experience to develop a best practices guide for employing nature-based solutions to reduce climate impacts and risks to communities. The project team will work with Climate Resilience Toolkit staff to advise on where and how nature-based solutions can be more fully integrated into the Steps to Resilience planning framework.

Supporting Communities’ Efforts to Measure Progress of Effective and Equitable Resilience Actions

EcoAdapt- \$75,000

EcoAdapt and partners at Adaptation/Insight will review and synthesize approaches, indicators, and metrics for evaluating adaptation project and program effectiveness at meeting a range of goals, including social, environmental, economic, and climate hazard risk-reduction. The project will develop an interactive catalog of indicators and metrics to support practitioners in designing context-appropriate adaptation processes. EcoAdapt and partners at Adaptation/Insight will work with the U.S. Climate Resilience Toolkit staff to develop trainings based on findings.

Looking ahead: CCRE 2022

Each year since its inception in 2018, CRF has engaged our partners to strategize about how best to position our financial resources and convenings most strategically. This has led to an ongoing, cyclical series of engagements and grantmaking that is guided by the RE to prioritize the investments of the CCRE. The resulting portfolio of investments and projects are increasingly aligned with our now-settled four priorities, and have begun to build upon previous work in ways that we could not have predicted when we initiated the Program. This coming year is going to look similar to previous years from a process perspective, but with important differences that will again be driven by the work that we have previously supported and enabled. As of this writing in January 2022, we have yet to determine how we will position our budget this year but have already begun to plan and will be communicating with the RE about those plans in the coming months. In the meantime, our forecast for activities is loosely structured on the process that has become familiar to RE collaborators. Our list of planned activities for 2022 includes:

Hosting a 3rd Resilience Ecosystem Workshop

- CRF will be planning and hosting a 3rd convening of the Resilience Ecosystem of practitioners in spring 2022.

Releasing a New Request for Proposals

- Utilizing input from participants at the Resilience Ecosystem Workshop to inform our funding priorities, CRF will release a new call for proposals in spring/summer 2022.

Awarding grants to support the broad Resilience Ecosystem of Practitioners

- CRF will announce new grants through the CCRE program in Fall 2022.

Continuing to promote and build upon our core values

- A commitment to Diversity, Equity and Inclusion (DEI) and Nature-based Solutions (NBS) for building resilience to climate change remain at the heart of CRF and the CCRE program. We will continue to explore ways to better integrate those values within both our own organization and in the projects we support. The CCRE program seeks build a better understanding of, respect for, and commitment to those values across the Resilience Ecosystem of practitioners. Through our grantmaking we aim to bring these same values to scale in communities working to build their own resilience to climate change across the U.S.

The 2021 CCRE Year in Review

Goals of the CCRE Program

- To expand the Coordination and Collaboration in the Resilience Ecosystem Grants Program by establishing a unique public-private partnership between CRF and NOAA.
- To create a shared investment program focused on the Resilience Ecosystem and in pursuit of developing the infrastructure that will result in a more climate resilient future for U.S. communities.
- To build a dynamic, strategic, and responsive program that is annually informed by feedback and guidance from members of the U.S. climate resilience community of service providers, practitioners, and decision makers.
- To at least double the investment that NOAA or CRF would be capable of making individually with existing investment budgets (a minimum of \$900K over three years).
- To recruit and convene an expert review panel to score and recommend grants that will include representatives from NOAA, CRF, and representative members of the RE community.
- To create a professional, transparent grantmaking process through clear communications and engagement of partners and RE community members.
- To fundraise to expand the program to create greater investment capacity overall and greater leverage for core funders of the CCRE including NOAA.

The CCRE Program has evolved each year since its inception in 2018, when our partnership with NOAA began. From the beginning, CRF engaged the RE to enable coordination and collaboration, reflecting the intent and name of the Program. Each year since our first Resilience Ecosystem Workshop, in January 2018, CRF and our partners have engaged directly with that community of practitioners to solicit feedback on fieldwide needs to better understand how our grantmaking can support efforts to scale resilience planning and implementation action, and to inform the criteria we use to evaluate proposals to the CCRE.

Each of our annual convenings has been different, building on the previous year, and enabling our investments to track our learning and share those outcomes with the RE as we progress. This past year has represented yet another step forwards for the field, and a hopeful leap forward for our and the RE's increasingly aligned and focused understanding of what is needed to scale our collective impact and enable widespread, professional, effective climate adaptation and progress on resilience across the U.S.

2021 Program Summary and Timeline:

April 2021 CRF and NOAA Co-host the CCRE Advisory Session

In April 2021, CRF partnered with the NOAA Climate Program Office and a group of external advisors to co-host an online CCRE Advisory Session. The meeting was attended by more than 30

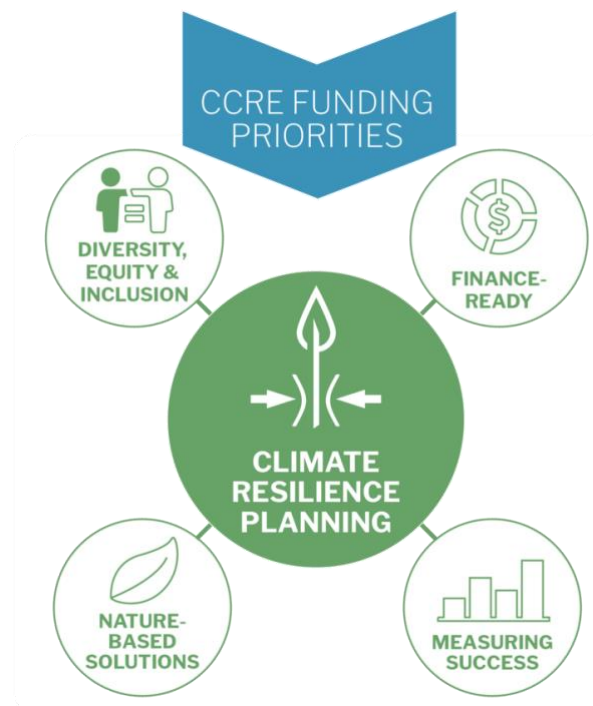
experts selected for their experience in four specific programmatic areas previously identified by members of the Resilience Ecosystem, and in which we anticipated making grants in 2021. We consider the meeting to have been quite successful in achieving our goal of gathering inputs and insights to build and prioritize a set of meaningful criteria that our reviewers used to score and evaluate proposals received by this year's CCRE program.

An unanticipated benefit of that meeting was a great deal of feedback and ideas captured under each topical area that were not immediately relevant to our current CCRE evaluation processes - but will no doubt provide useful guidance down the road for a number of efforts, including: developing and defining the 2022 CCRE program; building and structuring CRF's Resilience Accelerator grantmaking program currently in the planning phase with generous support from the Walton Family Foundation; and informing practices and priorities for national programs focused on bringing climate resilience planning to scale in communities across the country.

May 2021 CRF Releases a new Request for Proposals (RFP)

The release of this year's RFP in May 2021 marked an evolution for the CCRE program. While staying true to our commitment to source our programmatic priorities from the input we've received over the past three years from our constituents in the Resilience Ecosystem (RE), we chose to do two things differently with this year's solicitation:

1. The CCRE has focused on a narrower set of those RE priorities. The 2021 program has focused on four key areas where we believe that CRF can provide grants that help the Resilience Ecosystem bring adaptation planning and action to scale across the country. Those priority areas are: integrating principles of diversity, equity, and inclusion with adaptation planning, integrating nature-based solutions to climate change adaptation, designing finance-ready adaptation plans, and creating metrics and measures to track success in adaptation planning and implementation.



2. The CCRE, for the first time in the program's history, requested a specific set of deliverables aimed at supporting the NOAA Climate Resilience Toolkit's Steps to

Resilience framework, developing trainings for climate services practitioners, and other “tipping point” grants that set the stage for the Resilience Ecosystem’s collective efforts to scale resilience planning across the nation.

While the degree of focus for this year’s RFP was a departure from the more open-ended solicitations of years past, it remained grounded in our core programmatic values; that nature-based solutions to climate change should be fully considered as integral to any adaptation tool set or resource, and that diversity, equity and inclusion must be central components to any adaptation plan or project that hopes to succeed in building resilience in the places where it is needed the most.

September 2021 CRF Awards Four New Grants

In September 2021, CRF and its board approved four new grants through the CCRE program totaling \$300,000. As in the past, half of these grant funds were provided by NOAA. The remainder were drawn from private dollars sourced from our partners at the Doris Duke Charitable Foundation, resulting in a 1:1 match for NOAA’s contribution.

As noted above, the funding priorities of this year’s CCRE program were consistent with those identified the previous year, but the RFP was more prescriptive, representing a refinement of priorities identified by the RE in 2020. Specifically, we solicited proposals focused on four specific topical priorities, 1) integrating principles of diversity, equity, and inclusion (DEI) with adaptation planning; 2) integrating nature-based solutions (NBS) to climate change adaptation; 3) designing finance-ready adaptation plans; and 4) creating metrics and measures to track success in adaptation planning and implementation. These same four topics were the focus of our CCRE Advisory Session co-hosted with NOAA Climate Program Office earlier in the year.

The 2021 cycle was also somewhat different from previous years in other ways. Rather than traditional grants, the 2021 awards are structured as contracts for a specific set of tasks and deliverables. The four grantees are working to create synthesis papers under each of the four topical areas and to work collaboratively with Fernleaf, a NOAA contractor, to integrate their findings and contributions with curriculum being created by the CRT/Fernleaf team for its Adaptation Practitioner Guide and Trainer’s Manual. CRF and the NOAA CRT/Fernleaf team meet regularly with the four grantees and the CCRE Advisory Group to facilitate collaboration and enable consistent input into the new Practitioners Guide.

The four grants, recipient organizations, and team members are listed below.

2021 Climate Resilience Fund CCRE Awardees

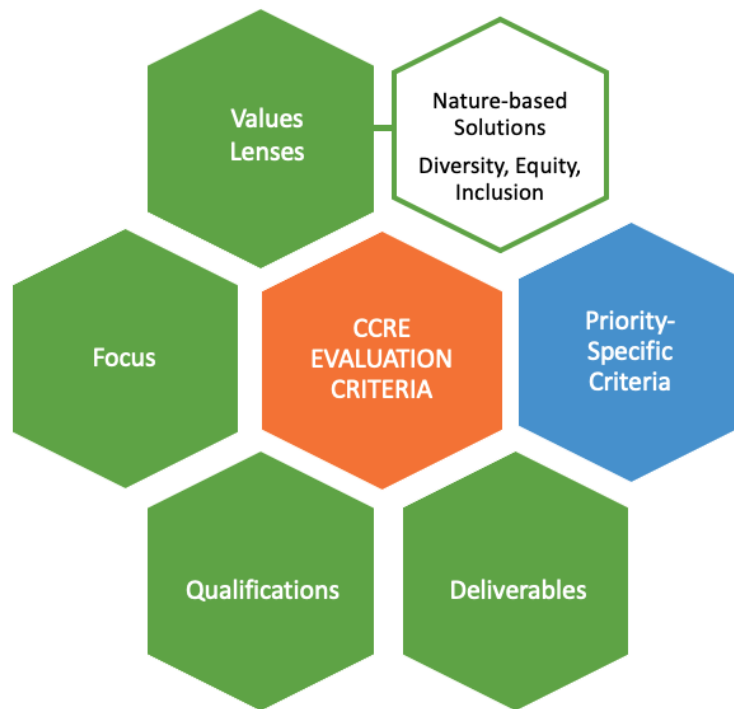
Priority Area	Grant Recipient Organization	Team
Finance Ready Resilience Planning	American Society of Adaptation Professionals (ASAP)	Beth Gibbons & Rachel Jacobson, ASAP; Joyce Coffee & Camilla Gardner, Climate Resilience Consulting; External Advisory Group
Integrating Diversity, Equity & Inclusion	Antioch University’s Center for Climate Preparedness and Community Resilience	Abigail Abrash Walton, Christa Daniels; Antioch University New England, with community partners, Eastie Farm and CREW
Nature-based Solutions for Resilience	National Wildlife Federation (NWF)	Bruce Stein, Patty Glick & Arsum Pathak, NWF; Laura Hilberg & Lara Hansen, EcoAdapt
Measures of Success	EcoAdapt	Lara Hansen, EcoAdapt; Jennie Hoffman, Adaptation/Insight; External Advisory Group

The Competition and Evaluation Committee

At this year’s application deadline in June 2021, CRF received 16 proposals for work across all four of the competition’s priority areas highlighted in the Request for Proposals (RFP). While this number appears low compared to the 59 proposals received in response to last year’s RFP, we were quite pleased to have so many applications particularly given the much narrower focus, and prescriptive project components and deliverables, which were detailed in this year’s RFP. CRF was fortunate to receive competitive proposals under each of the four topical areas and as a result we were able to launch our evaluation process on schedule in June.

CRF worked in close partnership with the NOAA team to recruit and select a group of volunteer evaluators to help us review and score this year’s CCRE applications. The increased focus of this year’s RFP on four topical areas required a team of reviewers that included more specialized expertise. As a result, eight new members were recruited to the review team; two each with subject matter expertise in each of our four priority funding areas (DEI, Nature-based Solutions, Financing resilience implementation, and Measuring success of climate resilience planning and

action). In addition to these eight subject matter experts, CRF recruited six core advisor/reviewers who have served on the team in the past, are familiar with the goals of the CCRE, and possess broad experience working with a large cross-section of Resilience Ecosystem of practitioners and the RE Theory of Change. Together, these reviewers included representatives from the federal government, philanthropy, nonprofit conservation and adaptation organizations, academia, and the private sector. Reviewers utilized a set of objective evaluation criteria developed by CRF with input from April's CCRE Advisory Session.



Workflow and CCRE Advisor Group for 2021 Grants

Unlike previous years' CCRE program, this year's accelerated grant timeline and integration structure with the CRT/Fernleaf team necessitated a much more intensive and hands-on approach than in years past. The integration of work products and coordination between the CRF grantees with the concurrent process underway at the CRT/Fernleaf team to develop a Practitioner Guide and Trainer's Manual is a complex undertaking. CRF and NOAA have teamed to create a process that is helping to shepherd and support the four grantee teams through their work during this abbreviated 6-month timeframe.

To provide additional capacity to the effort, we have recruited a group of expert advisors from across the Resilience Ecosystem to help guide the efforts of both our grantees and the CRT/Fernleaf team. The Advisory Group is working work to ensure that the final products from both these grants and the Practitioner Guide will be maximally useful, relevant, and additive to

the field of resilience practitioners whom we hope to serve. The names of this exceptional group of advisors are listed below:

Membership of CCRE External Advisory Group (alphabetical by last name)

Name	Affiliation	Specialty
Joyce Coffee	Climate Resilience Consulting	Finance for resilience action
Anna Marandi	National League of Cities	Supporting community leadership
Melissa Ocana	University of Massachusetts- Amherst	Networking climate professionals
Danny Peralta	The Point CDC	Community-based organizations
Carolyn Yvellez	Farallon Strategies	Diversity, equity, and inclusion

CRF has worked with the NOAA CRT team to design a series of interactions for both the grantees and the external advisor group. Also, thanks to the efforts of the NOAA Climate Program Office and their partners at USGCRP we recently hosted a briefing for the Federal Adaptation and Resilience Group (FARG) membership featuring presentations by each of our four 2021 CCRE grant project leads to discuss the work underway and solicit information from FARG members that will inform and improve the final outputs of this work.

Conclusion

CRF is delighted with the direction that the CCRE program has taken this year to further its service to the Resilience Ecosystem of practitioners and focus in on four topical areas that have risen to the top of our constituent’s priority list for building the field of climate resilience during the Resilience Ecosystem Workshops we’ve co-hosted with NOAA over the past three years.

These “tipping point” investments have great potential to help create important, equitable and measurable standards for the work of resilience practitioners and bring those efforts to scale in hundreds of communities across the country. We are encouraged as we see the partnership develop between this year’s CCRE grantees and the CRT/Fernleaf team work together to integrate the grantees’ project outputs with the Practitioner Guide and Trainer’s Manual under development.

Furthering the impact of that joint effort is the work of our new CCRE Advisory Group, as they have begun to provide expert input to the process that will undoubtedly improve the quality and usefulness of the Practitioners Guide to its intended audience.

Highlights from 2019 - 2020 CCRE Grants

2020 CCRE grants

- Local Government Commission [[Adaptation Capability Advancement Toolkit \(Adapt-CA\)](#)]
- Headwaters Economics [[Neighborhoods at Risk](#)]
- American Forests [[Statewide Models of Ambient Heat for Rhode Island, CAPA Strategies Report](#)]

2019 CCRE grants

- The [Resilient Rural America Project](#) (RRAP) funded through the Model Forest Policy Program (MFPP) has wrapped up work on its [RRAP2 Handbook for Rural Flood Mitigation](#). This work may plug in well with any future efforts to simplify and advance resilience planning in rural communities.
- EcoAdapt has similarly completed initial development of the [Adaptation Service Providers Registry](#). The Registry is up and running with a starter group of 12 vetted providers and poised to scale up. The Registry will be an important tool in helping match communities with service providers best suited to meet their particular needs.
- ICLEI/Azavea Top Hazards layer for [Climate Explorer](#)
- [CAPA Strategies' Urban Heat Island mapping work for the National Integrated Heat Health Information System](#))

These projects have all added useful and foundational building blocks to the field of climate resilience. We expect all these resources will continue to play important roles in advancing the field of climate adaptation practice in the years ahead.

Other Publications from the CCRE

2021 RFP [[PDF](#)]

2021 CCRE & NOAA [Joint Press Release](#)

CRF Contacts

John Nordgren, Managing Director, CRF
John@climateresiliencefund.org

Darren Long, Associate Director, CRF
Darren@climateresiliencefund.org

- End -